

# Design for Schools

Education  
Guide  
Schools



How acoustic solutions make a difference for  
focus and wellbeing in schools

**Sounds Beautiful**

Are you working with school design? Whether you're building a new state-of-the-art education facility or renovating an old school, this brochure is for you. You will find the latest trends that are impacting the educational space and tips on how schools should be designed with acoustics in mind.

This easy-to-navigate booklet was developed for Architects and Designers as a tool to inspire and guide the reader with insightful knowledge about optimising the education space for learning and wellbeing.



**Our acoustic solutions  
reduce noise levels in  
classrooms so that students  
can hear, concentrate,  
learn, relax and play.**

**Parik Chopra**

Managing Director, Rockfon

# Content



**04**  
Current trends driving education design



**08**  
How to design for different spaces in a school



**10**  
Hallways and breakout areas



**14**  
Offices and administration



**18**  
Classroom



**22**  
Cafeteria and kitchens



**26**  
Gymnasiums



**30**  
Changing and showering rooms



**34**  
Product Overview



**38**  
Product Highlight



**40**  
We are your sustainability partner



**42**  
Our services

# Current trends in schools

Do you like the sound of a happier, healthier school? We do too. This is why we're contentiously working and innovating with architects to find solutions that help students realise their potential.

Let's take a deeper look at which leaning trends are shaping the design of schools.



## Dynamic learning

In recent years, schools are moving away from the industrial style of learning, where a teacher stands in front of the students, imparting knowledge with little to no interaction. Today's schools are much more dynamic, where students debate, learn by doing and work in teams. This influences the need to control noise levels in very different ways than before.

### How can we help

Speech intelligibility and actively directing or blocking sound leads to happy teachers and students. Our acoustic ceiling and wall solutions meet the very best performance standards on the market that helps improve a students' ability to concentrate, think and learn.





For every 10 dB increase in noise pollution, 8-9-year-old students performed 5.5 points lower on their national standardised test.

Allen J.G. et al, Harvard Schools For Health Foundations for Student Success (2018)

## Shared spaces

What we see now is that schools aren't only teaching in the classrooms, hallways and lounges are becoming breakout spaces for interconnection and interaction. Adding to the complexity, schools aren't just used for schooling anymore, they're becoming integrated into the wider community - a shared space for everyone.

### Where do we come in?

Creating spaces that function for multiple purposes means that the design needs to appeal to a variety of users. Our acoustic solutions are built for modularity, making it easy to reconfigure a space to look as good as they sound.

## A safe space

As we've recently seen, the eventuality of a pandemic has forced schools to become more responsive. This has led to a much higher focus on hygiene and the cleanability of building materials throughout the school.

### How can we support you?

Our ceilings are made from stone wool, which is naturally resistant to mould and bacteria. They are easy to clean and designed to meet the most rigorous hygiene codes and safety regulations.



# How to design for different **spaces** in a school

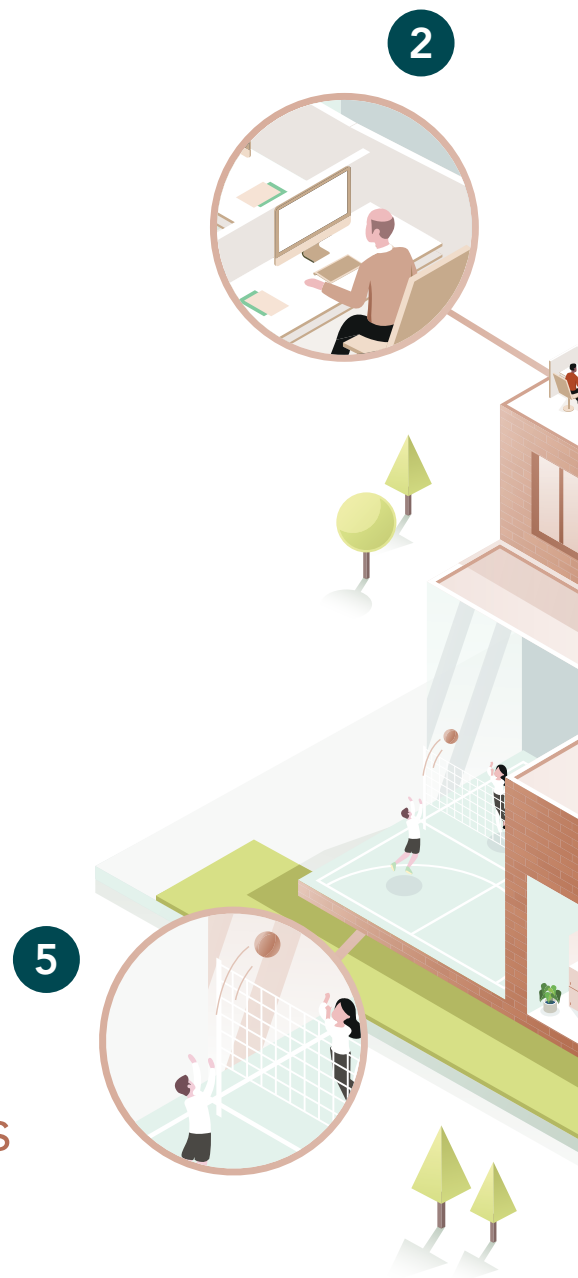
## **Building the future of tomorrow.**

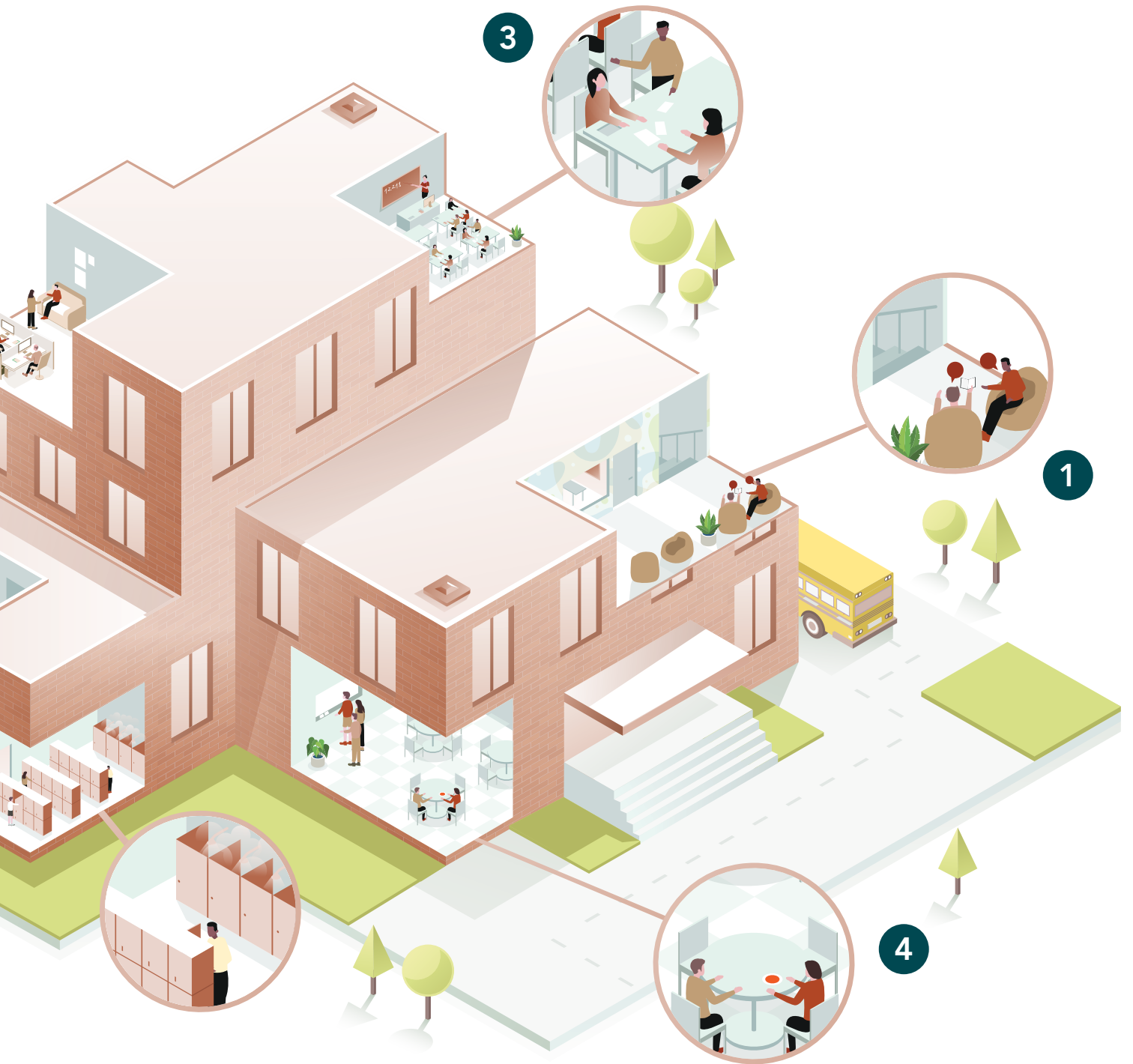
The importance of preparing students for the future means building and creating an environment that will support, facilitate and encourage them to learn.

## **Strength of Rockfon**

Our broad range of acoustic solutions gives you the freedom to design, whether you are looking to regulate noise in the classroom or need impact-resistant acoustic solutions in gymnasiums. We've got you covered when it comes to the different spaces of a school.

- 1 Hallways and breakout areas
- 2 Offices and administration
- 3 Classrooms
- 4 Cafeteria and kitchens
- 5 Gymnasiums
- 6 Changing and showering rooms





# Hallways and breakout areas

## Multifunctional spaces

Hallways are multi-functional spaces that not only both welcome and guide students, teachers and visitors throughout the school, they are also routinely used as breakout areas for students to work and learn together.

These frequently busy areas can suffer from a lot of chatter and heavy foot traffic, which means that it is crucial to have a high level of sound absorption in these areas of a school to enhance collaboration and interconnectivity without pesky noise getting in the way.







### Shhh. Quiet please, - We're studying

Two elements that are critical for the learning process, whether that be in the classroom or shared spaces, like the hallways or lounges, is enhanced acoustics and access to natural light. Designing these areas for quiet is especially important for children and teenagers, who can have difficulty concentrating.

Acoustics isn't the only important measure, a study in the US, of 21,000 students, showed that access to natural light improved reading and math outcomes. Drawing in sunlight into the hallways and breakout areas is so important because window real-estate can be sparse.

### Don't forget the walls

In busy areas like the hallways, it can be a challenge to get the acoustics just right, especially because of the many reflective surfaces found here. A great addition and design opportunity can be found using the walls. They are a great way to modulate noise and prevent it from spreading further.

One study in the US, of 21,000 students showed that pupils with **more access to natural light** had 26% higher reading levels and 20% higher math results.

Scientific American Mind, April 2009

# Get the right solutions for your design

## Hallways and breakout areas design solutions

Hallways are the gateways and arteries of every school, but as schools struggle with space, they are more and more regularly being used as learning areas as well. To hit the acoustic sweet spot in these areas, acoustic ceilings and durable wall solutions are needed to ensure that noise is effectively controlled.

Here are the products we recommend

### **Rockfon Blanka®**

Rockfon Blanka offers the best in class acoustics, combined with a super white surface that has high light reflection and light diffusion properties. In fact, the surface draws natural light 11% further into space than many other ceilings. The range also comes in thicknesses of up to 40mm, which is ideal for controlling noise in high activity spaces.

### **Rockfon® VertiQ® wall panel**

Attractive and durable, our Rockfon VertiQ wall panel is highly sound absorbent and impact resistant. It comes in several colours and can be installed both vertically or horizontally - providing that extra level of sound absorption needed to prevent the noise from spreading throughout the busy space.



## Acoustic design tips

Here are some acoustic design tips for creating a great acoustic environment in hallways and breakout areas.

1. Use high-quality sound-absorbing materials on the ceilings and walls to reduce the sound and prevent it from spreading.
2. Use thicker and more sound-absorbing materials around the parameters of the room to optimise the sound reduction in the lower frequencies further.



### ◀ CASE STUDY

## Primary School no 46

Poznan, Poland

### *Challenge:*

This renovated school from the 1930's used prefabricated concrete walls and ceilings, which were kept bare for aesthetic reasons.

### *Solutions and results:*

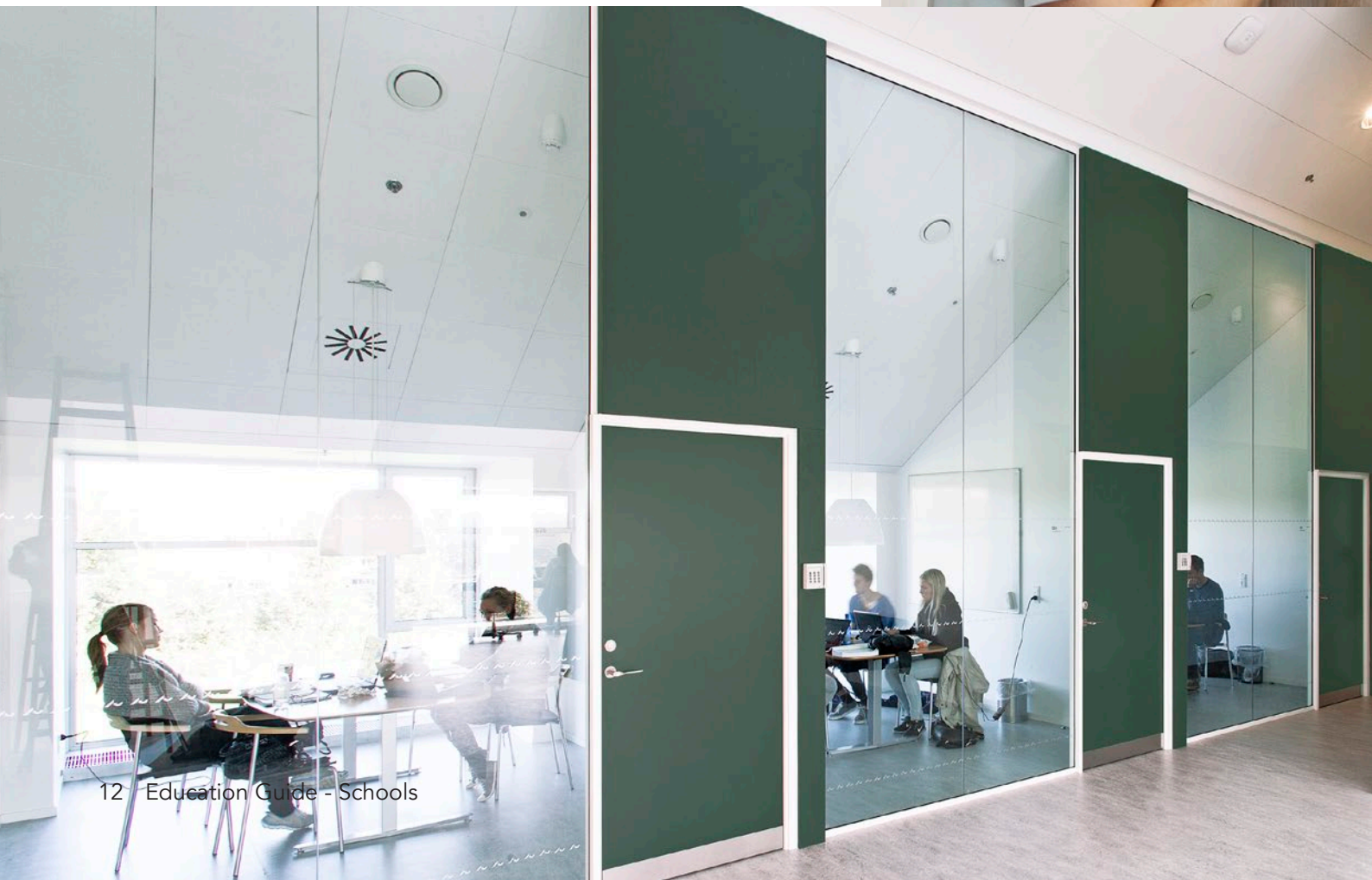
This decision to keep the reflective surfaces influenced the necessity of acoustic solutions in order to create a comfortable indoor environment. The architect opted for a suspended ceiling and wall panels to meet the current school regulations in Poland.

# Offices and Administration

## Peace and quiet

The office and administration areas of schools are where educators go to prepare for their lessons, chat with the colleagues about educational issues and to socialise.

Sadly, these areas can quickly become a forgotten space. While there is rightly an extensive focus on creating the right indoor environments to facilitate student learning, it is important also to have a comfortable and energising spaces for factuality as well.





### Setting the tone

The design of the offices and administration areas set the educational and professional tone of the school - and privacy is essential for that. Teachers need to feel safe that what is discussed, doesn't leave the room - whether that is a conversation between colleagues, parents or a student. Keeping the sound from spreading is critical in these areas.

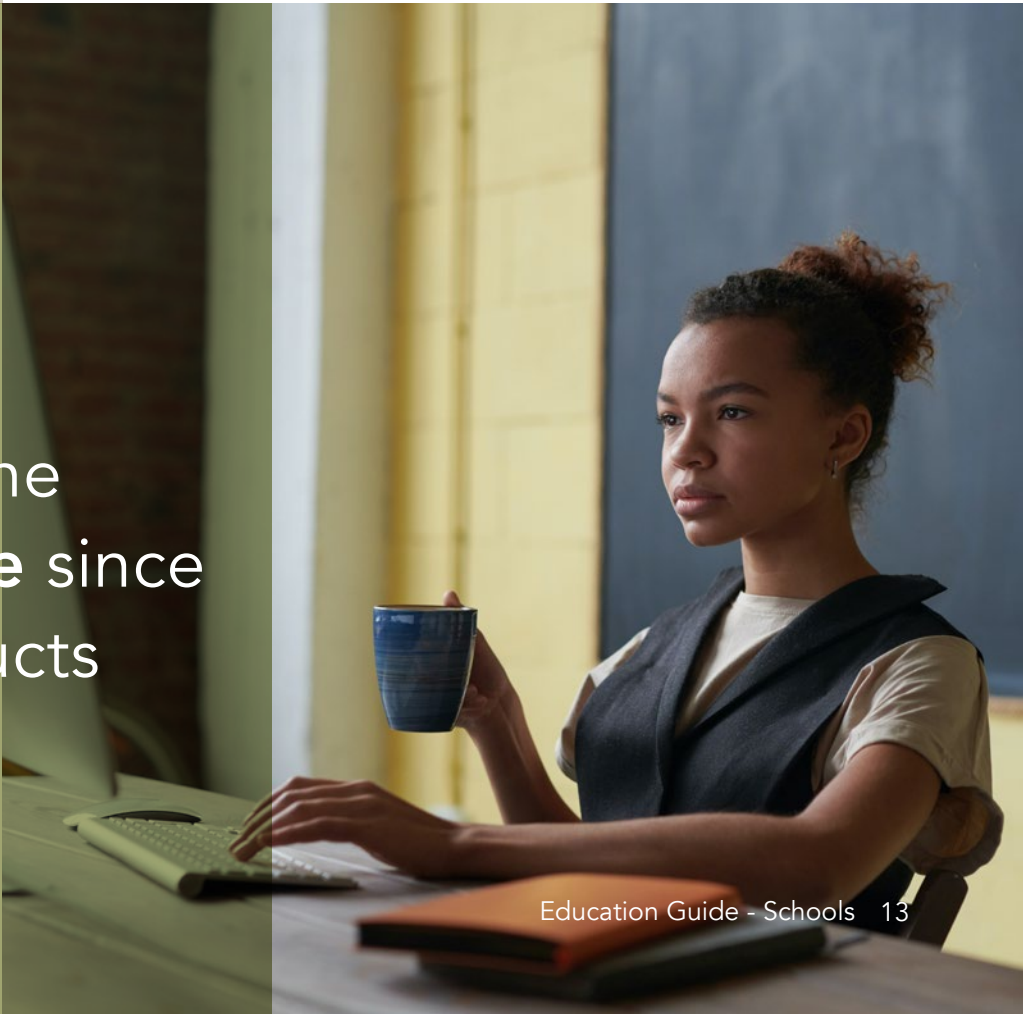
### Inspire us!

Great acoustics and good indoor comfort is what teachers need to find a reprieve from the hectic and busy day of guiding and nurturing students. By choosing sound-reducing building materials, you can create an escape that will revitalise teachers to attack the day.

//

We have seen a remarkable difference in the **indoor climate** since Rockfon products were installed.

Principal Tom Stormyr,  
Heistad Youth School



# A ceiling that supports

## Office and administration solutions for schools

Not all schools have the same budget, whether that is for a renovation project or a new build. However, this doesn't mean that you must compromise on acoustics. We have solutions to fit most budgets, and that lets you deliver a comfortable environment that will support teachers and staff.

### Here are the products we recommend



#### Our Rockfon dB range

Our Rockfon dB solution combines the best of two worlds. It is made with a stone wool core that absorbs noise and creates a comfortable indoor environment. The high-performance membrane on the back provides sound insulation and helps reduce the transmission of noise from room-to-room. This is an ideal combination when you want a restful space for private conversations.



#### Rockfon® Koral™

This all-round tile has a Class A sound absorption rating, the highest available on the market, and an attractive white, micro-textured surface. It is available in a selection of standard edges and dimensions, making it a popular and affordable choice in many schools.



## Acoustic design tips

Here are a few things you can do to improve the acoustic environment in the office and administration sections of a school.

1. Use high-quality sound-absorbing materials to reduce the sound levels and create a relaxing atmosphere.
2. Have a focus on sound-insulating materials to keep conversations private and stop sound from spreading.



## A teachers well-being matters!

A recent study in the UK, by Professor Jonathan Glazzard and Dr Anthea Rose, showed that there is a direct correlation between a teachers wellbeing and their ability to preform in the classroom, which is why it is so important to support teachers and educational staff comfort.

# Classrooms

## A learning space for everyone.

The classroom is that dynamic space in a school where students come together to collaborate, think and learn. Learning happens in multiple ways which requires careful considerations when it comes to room acoustics.

The traditional way of teaching needs to consider the speech intelligibility of the teacher so that the students in the back of the room can properly hear what is communicated. Group work requires controlling the sound level in the room to avoid distractions and excessive noise. All speech frequencies need to be considered, in particular the low frequencies.



## Acoustic design tips

Here are some acoustic design tips that will help students concentrate, think and learn in the classroom.

1. Use high-quality sound-absorbing materials within all speech frequencies, especially the low ones.
2. A 40mm tile at the perimeters of the room can help increase speech clarity.
3. Use the walls for further acoustic mitigation, to minimise echoes and to meet acoustic building requirements.







### The influence of colour

The right visual design, colours, atmosphere are decisive elements that can either enhance or inhibit the learning experience.

Colour, for instance, influences our emotions, which also affects our attention and willingness to work. Bringing in colours to a classroom is a great way to communicate the intended purpose of the space. For example, matt, soft and warm colours have been known to induce concentrated work. Why not combine this with acoustics and choose a coloured ceiling?

**30.7% of the students say that they can only “pretty much” hear what is being said during class.**

Indeklima og fagligt udbytte, Dansk Center for Undervisningsmiljø, 2013

### Dynamic learning

Gone are the days where teachers simply lecture students in a classroom, now there is so much more focus on pupils acquiring skills like creative and design thinking, as well as developing skill sets that promote working together and collaborating.

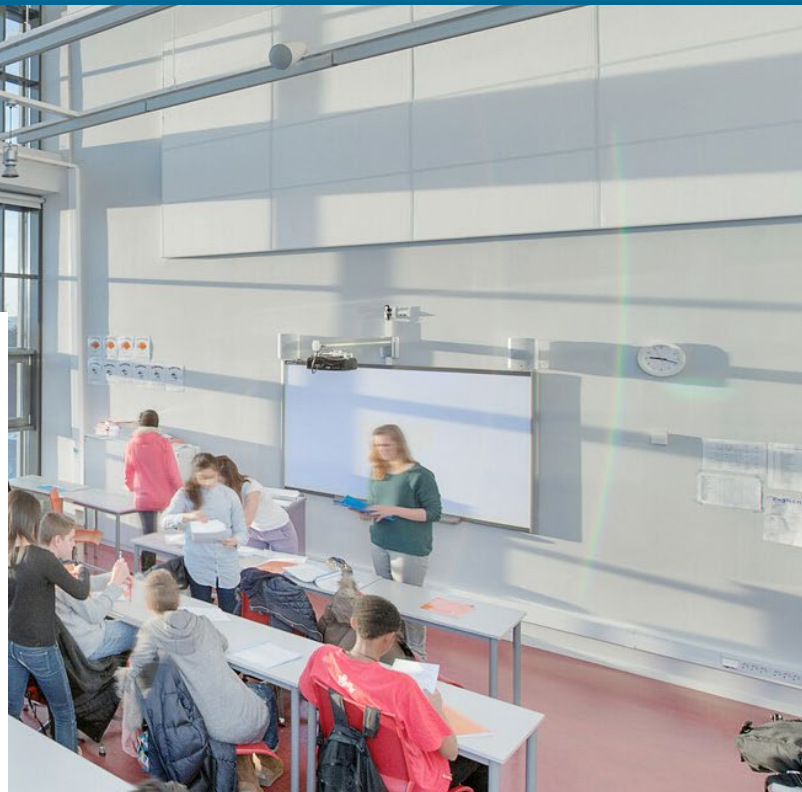
This spirited forum of learning puts stress on the indoor climate, enhancing the need for acoustic comfort. This new reality of learning is recognisable in many European countries, which is why the building requirements for schools are very high. In fact, in classrooms an acoustic ceiling alone is often not enough to meet the standards, which means that additional acoustic corrections need to be installed on the walls.



# The right products to stimulate learning

## Classrooms design solutions

The classroom is arguably one of the most important rooms in a school. Acoustics need to be carefully considered to ensure that speech clarity and noise reduction meets the specific building regulations. A room's atmosphere also plays a role for fostering a learning environment and here colour can play a role.

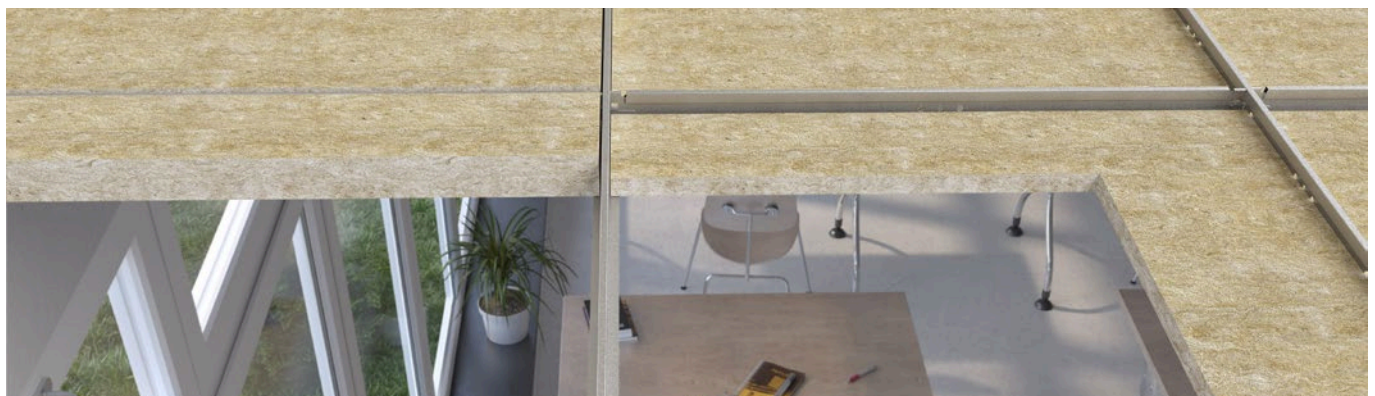


## Make yourself heard

### Rockfon Blanka® Activity

Rockfon Blanka Activity is designed for classrooms where speech intelligibility is crucial, and noise and activity levels are very high. The thicker acoustic ceiling tile has high absorption, also for low frequencies, which makes it ideal for controlling the sound

level when installed around the perimeters of the room. Its durable surface makes it resistant to dirt and everyday wear and tear, keeping the ceiling looking as bright as the day it was installed.



# Brynseng School

Oslo, Norway

## Challenge:

The school has a capacity for 840 students and approximately 110 staff members, which meant a real focus on creating an optimal learning environment for both teachers and students.

## Solutions and results:

The architect opted to use Rockfon Blanka Activity in all the classrooms for superior speech intelligibility, helping improve the students ability to learn, think and concentrate.

CASE STUDY ►



Here are the products we recommend

### Rockfon Color-all®

Our Rockfon Color-all range comes in 34 exclusive colours of acoustic ceiling and wall solutions to inspire and enhance your interior design scheme.

### Rockfon Eclipse® Wall Panel

These aesthetic, frameless acoustic wall solutions are perfect for classrooms where extra sound absorption, combined with good design is required in schools.

### Rockfon® VertiQ® wall panel

This durable wall panel is highly sound absorbent and impact resistant which can be key in busy areas of a school. It comes in different colours and can be installed both vertically or horizontally

One US study found that 50% of teachers had suffered irreversible damage to their voices due to the Lombard effect.

BUILDING IN SOUND | BIAMP  
SYSTEMS WHITEPAPER

# Kitchen and Cafeteria

## A place to come together

Kitchens and cafeterias service many students every day. As such, these areas of the school have to be large spaces, both for food preparation as well as in the cafeteria where the students eat.

The multi-purpose area of the school, where people meet to eat, talk, hang out or work, has two very specific challenges that require a thoughtful design. These spaces need to be both a hygienic, but it also needs to be an equally comfortable one with great acoustics.



Rockfon is the only one who managed to control sound and **deliver the acoustics needed** in the different rooms.

Lee Dade  
Building and Project Leader





### **Design solutions for a great ambiance**

The cafeteria is a social hangout for much of school life that doesn't happen in the classroom. This makes the space a great area to incorporate a variety of interior design elements, like colours or shapes, which can be used to tell the story about the beliefs or character of the school.

### **It's all about acoustics**

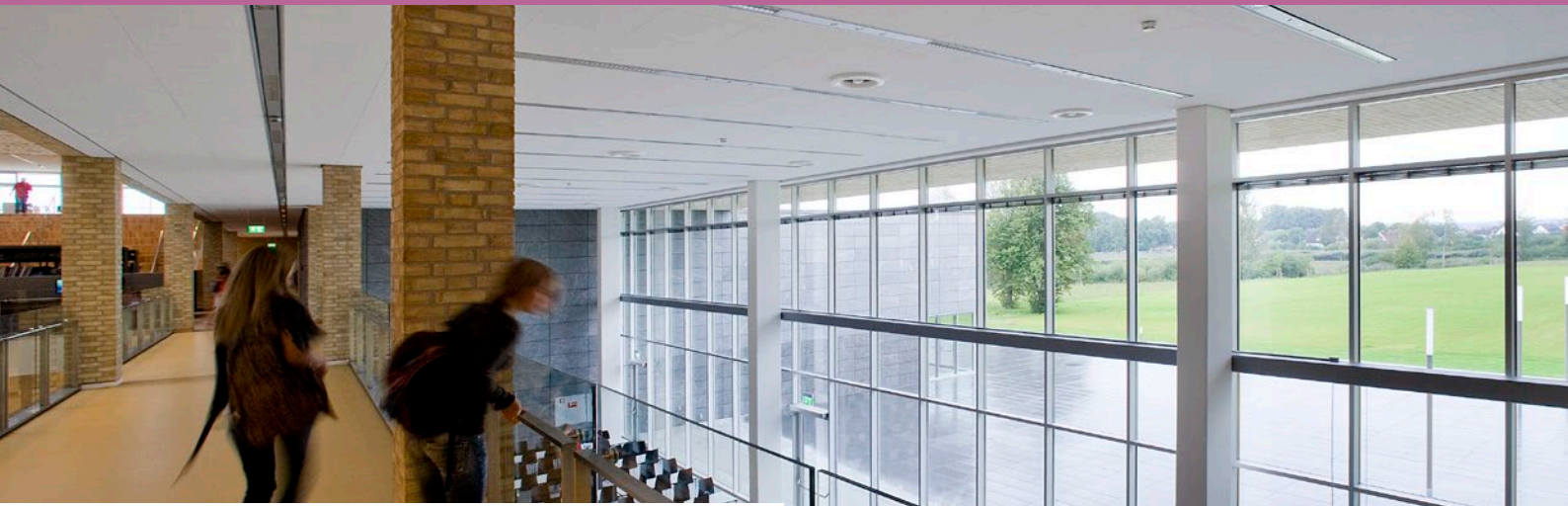
Like the hallways, the canteen is a bustling space with a lot of activity, not only used to enjoy lunch, but also to do group work and hang out. Noise levels can be very high due to the number of people gathered together. Unwanted sounds can spread to other areas of the school if the acoustics are not considered.

### **A hygiene friendly zone**

Like any area where food is prepared, hygiene is a key concern. It is vital in these spaces that the building materials, including the ceiling, can be cleaned and disinfected regularly. Without proper sound absorption, noise will reflect on the hard surfaces and create a noisy and stressful environment.

# Get great hygiene that sounds right

## Kitchen and Cafeteria design solutions



This lively space of the school requires a considerate design that is hygienic, inviting and that prevents sound levels from escalating.



### Here are the products we recommend



#### Rockfon Color-all®

Our Rockfon Color-all range comes in 34 exclusive colours of acoustic ceiling and wall solutions to inspire and enhance your interior design scheme.



#### Rockfon Eclipse®

Rockfon Eclipse is a beautiful, frameless acoustic island that comes in a variety of geometric shapes. They are perfect for improving sound absorption in combination with a fun design.

### Acoustic design tips

Have a look at three things you can do to create a comfortable and safe space in the kitchen and cafeteria.

1. Use sound-absorbing solutions that meet the most rigorous hygiene codes and safety regulations and that are resistant to mould and bacteria.
2. Use highly sound-absorbing ceilings and wall solutions to control the noise levels.
3. Play with the design of the ceiling and walls to create a warm and inviting atmosphere in this large space.

# Houtens School

Houten, Holland

## Challenge:

The architects of the Houtens School in the Netherlands added colour to stimulate the students to evoke the cultural response to the space.

## Solution and results:

BBHD Architecten used Rockfon Color-all to bring a dollop of colour to their design to highlight the function of the space, guide the pupils through the school, reduce stress and create a comfortable indoor climate.



CASE STUDY ►

# Keep it clean and sanitary

## Rockfon® MediCare® Standard

An outstanding balance of acoustic comfort and cleanliness that doesn't contribute to the growth of MRSA and ensures low particle emission.

By choosing a ceiling solution that is resistant to mould and bacteria, you ensure a safe space.



# Gymnasiums

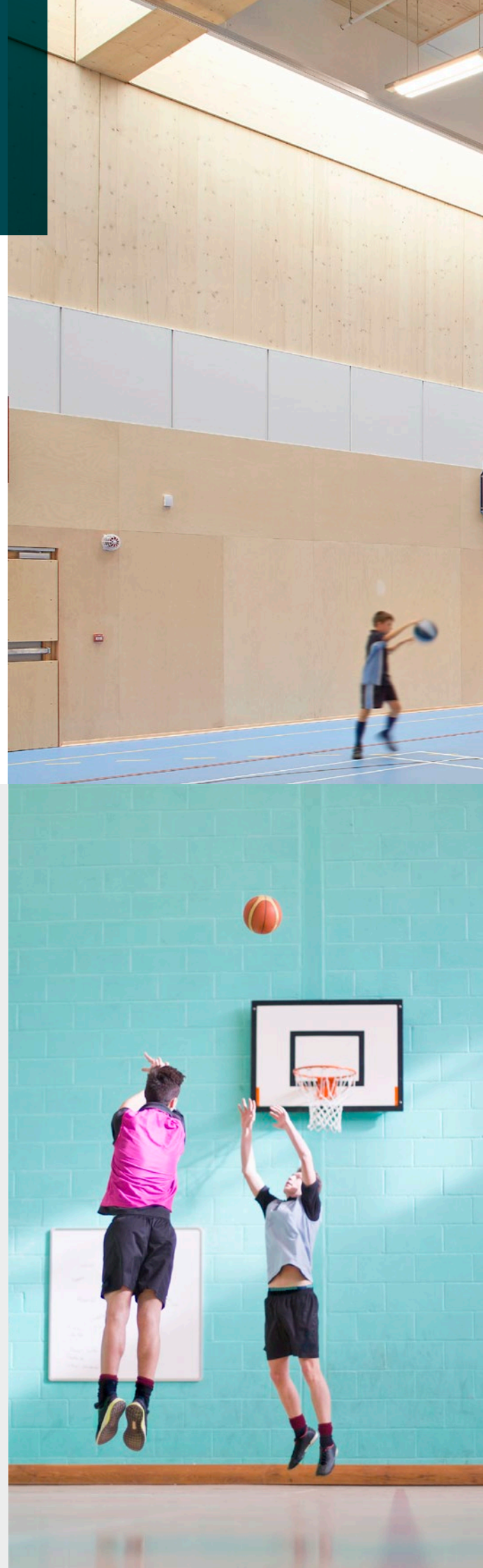
## The perfect place to be active.

Gymnasiums are probably the loudest rooms in a school. In this large open area, you will find excited students shouting, gym equipment ricocheting off the floors and walls and teachers trying to be heard through it all. This cocktail of noise has a detrimental effect, both on the children and the teachers as well.

## Acoustic design tips

Make gymnasiums fun and enjoyable by using these acoustic design tips.

1. Use acoustic sound-absorbing solutions that meet the requirements for impact resistance.
2. Use both the ceilings and walls to enhance sound absorption and increase speech clarity.
3. Combine with a suspended grid solution specially designed for impact areas.







### **Keeping a healthy indoor climate**

Gymnasiums are renowned for their poor indoor comfort if the proper acoustic treatments haven't been thought into the design. These areas, because of the commotion, very easily create an unbearable Lombard effect, which inevitably causes everyone to speak louder - fighting against the noise, just to be heard. This has a negative influence on the physiological and psychological wellbeing of students and teachers.

### **Robust acoustic solutions**

The rough and tumble areas of the school need great acoustics, but what's more, these spaces also require acoustic ceiling solutions that are robust and can withstand an impact without being damaged.

Exposure to noise polluted rooms can hurt a child's speech, listening and reading ability, their concentration and memory.

Allen, J. G, et al 2017.

# Carefree play and comfort

A robust and comfortable indoor climate

Most activities that take place in Gymsnasiums are noisy, which is why it is key to reduce sound levels and increase speech clarity with solutions on both the ceiling and walls. Furthermore, the solutions must be resistant to impact, because they will inevitably be hit in this active space.

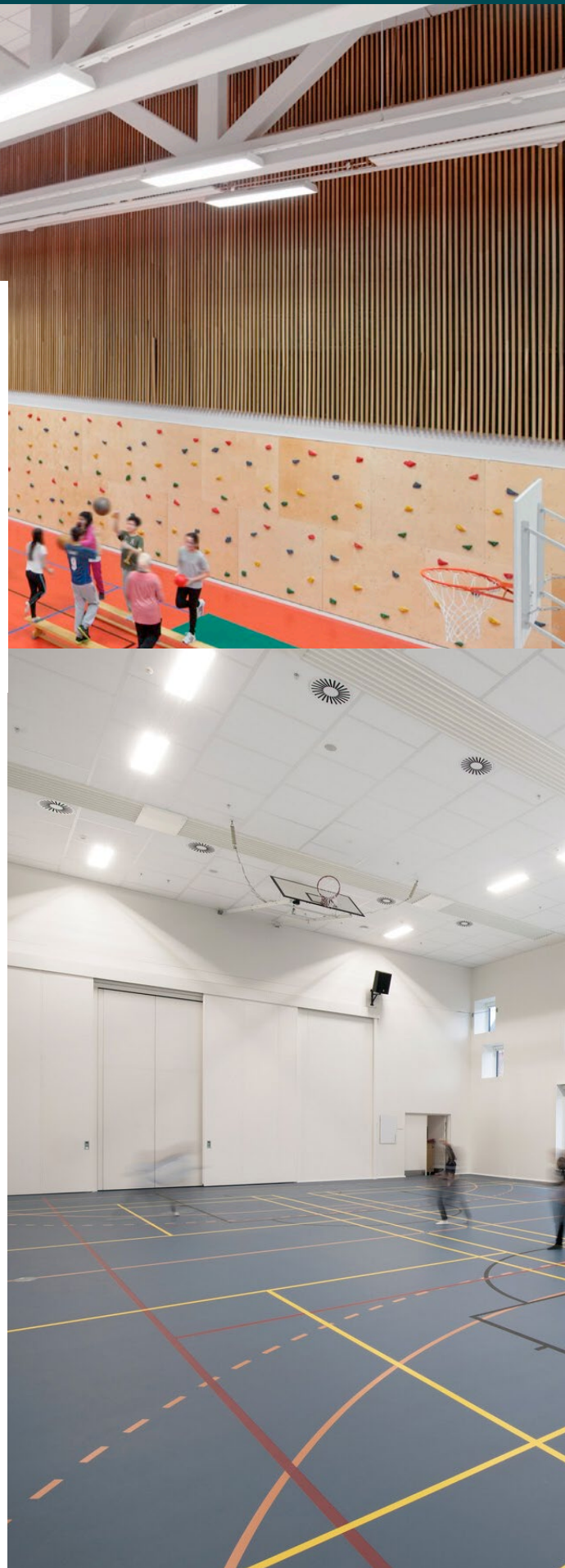
Here are the products we recommend

## Rockfon® Universal™ Baffle

Rockfon Universal Baffle offers a creative and innovative acoustic solution, available Universal White and in 33, subtle to bold. Its edges are encased in a robust, powder coated galvanised steel frame, which provides multiple installation options. It is ideal for thermal mass areas such as gymnasiums & sports halls.

## Rockfon® Boxer™

Rockfon Boxer is a highly impact-resistant tile ideal for sports halls. It has excellent sound absorption properties also in the low frequencies.





## ◀ CASE STUDY

# Frederiksbjerg School

**Aarhus, Denmark**

### *Challenge:*

Running, jumping, hopscotch is all allowed on Frederiksbjerg School, therefore, Henning Larsen Architects made an extra effort to create a good acoustic environment for the more than 900 students at the school.

### *Solutions and results:*

To create the right acoustic atmosphere in the gymnasium of this award-winning school, Henning Larsen Architects installed Rockfon Boxer AEX because of its superior acoustic and impact resistance properties.

# Changing and showering rooms

With its many hard surfaces, which are great for hygiene and cleanability, the changing rooms in schools are often terribly noisy. To help offset these challenges, it is important to look for acoustic ceiling solutions that will dampen sound reflection, but that can also withstand the humid environments found in these spaces.



## Acoustic design tips

Keep sound levels down and hygiene levels high in changing and showering rooms by following these tips.

1. Use acoustic solutions that can withstand humid environments, which won't sag over time and which doesn't contribute to mould or bacteria build-up.
2. Make sure sound absorption is high to avoid that sound is bouncing off the surfaces.





Speaking louder to be heard continuously escalates the noise and makes a room even noisier. This is known as the “Lombard effect”.

Pascal van Dort  
Global Acoustics Ambassador



### **Resist the humidity**

Moisture often builds up in naturally “wet” rooms like changing rooms and shower areas, which can be tough on the material in the room. High humidity can weaken the structure of certain ceiling panels, causing them to lose shape and sag over time. It can also expose people to harmful damp conditions. Our ceiling panels are dimensionally stable up to 100% relative humidity—eliminating the risk of sagging, warping or breaking.

# Comfortable and hygienic rooms

## Changing and showering rooms design solutions

Noisy and humid, changing rooms and shower areas suffer from poor acoustics because of the hard surfaces found in these areas. However, choosing the right acoustic ceiling solution that can withstand humid environments can enhance the space.

Here are the products we recommend



### Rockfon® Koral™

Rockfon Koral is an attractive white, micro-textured surface that has the highest sound absorption rating. This easy to clean acoustic ceiling solution is a practical and affordable choice.



### Rockfon® Tropic™

Rockfon Tropic is a versatile tile with the highest sound absorption rating, Class A. It comes in a full range of dimensions in semi-concealed and visible grid options. A straight forward, cleanable and popular solution.

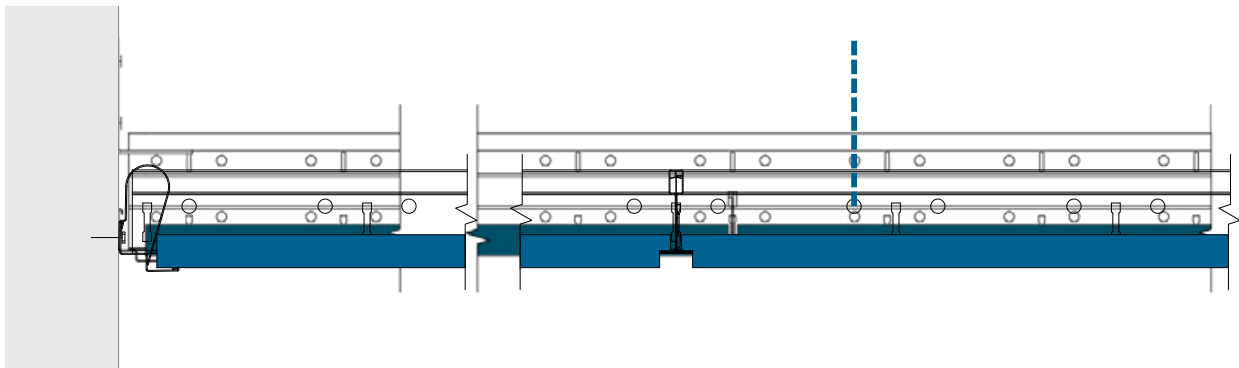


### Rockfon® System T24 A, E™

This is a ceiling comprising a 24mm wide exposed grid made from galvanised steel with a smooth white\* visible surface and square (A edge) and / or rebated, tegular (E edge) tiles. It comprises main runners, cross tees (available in many lengths), perimeter trims and a variety of accessories.

\*Other colours are available to order.

All the grid profiles have a uniform height of 38mm ensuring smoother integration of services and fittings. Rockfon System T24 A/E can be either suspended or directly fastened to the soffit using a variety of hangers.



## Ørestad Skole

Ørestad, Denmark

### Challenge:

When the newly established Danish city of Ørestad commissioned the architects at KHR Arkitekter to design a school - they were looking for one that would ensure the building's stature as the modern city's social and cultural focal point that had a comfy indoor atmosphere.



















### Solutions and results:

The architects delivered a modern school building where the acoustic ceiling played a vital role in providing a calm atmosphere in a busy environment. Minimising distractions and noise, as well as choosing durable solutions, was key for KHR Arkitekter.

◀ CASE STUDY

# School product specs and where to use them

Let's take a final look at the products and rooms that you've just seen

Properties	 Rockfon® Artic™	 Rockfon® Tropic™	 Rockfon® Sonar™	 Rockfon® Sonar Activity™	 Rockfon® Color-all™	 Rockfon® Eclipse™	 Rockfon® VertiQ™ wall panel	 Rockfon® Universal™ Baffle	
 <b>Sound absorption</b>	$\alpha_w = 0.90$ (Class A) NRC = 0.85	$\alpha_w = \text{up to } 1.00$ (Class A) NRC = up to 1.00	$\alpha_w = \text{up to } 1.00$ (Class A) NRC = up to 1.00	$\alpha_w = 0.95$ (Class A) NRC = 0.90	$\alpha_w = 0.95$ (Class A) NRC = up to 0.95	$A_{eq}$ (m <sup>2</sup> /item) * Distance between items greater or equal to 2000 mm	$\alpha_w = \text{up to } 1.00$ (Class A) NRC = 1.00	$A_{eq}$ (m <sup>2</sup> /item) C - center distance between baffles' rows, H - suspension height: net distance between baffle and the soffit	
 <b>Surface durability</b>	-	-	-	-	-	Enhanced durability, dirt resistance and Wet-scrub resistance: Class 1	-	-	
 <b>Impact Resistance</b>	-	-	-	-	-	-	Rockfon System VertiQ C Wall (restrictedly safe against ball throwing)	-	
 <b>Light reflection</b>	82%	86%	85%	85%	Colour-dependent	87% light reflection (rear side: 79%) >99% light diffusion	White 72% Lightgrey 61% Grey 33% Black 5%	White (77%) Charcoal (4%) Color-all (Colour dependent)	
 <b>Clean room</b>	-	-	ISO Class 5	ISO Class 5	-	-	-	-	
 <b>Cleaning</b>	Vacuum	Vacuum	- Vacuum - Damp cloth - Chemical resistance: resistant to diluted solutions of ammonia, chlorine and hydrogen peroxide	- Vacuum - Damp cloth - Chemical resistance: resistant to diluted solutions of ammonia, chlorine and hydrogen peroxide	Vacuum	- Vacuum - Damp cloth	-	Vacuum	
 <b>Hygiene</b>	Stone wool provides no sustenance to microorganisms								
 <b>Humidity and sag resistance</b>	Up to 100% RH. No visible deflection in high humidity C/0N					Up to 100% RH. No visible deflection in high humidity. Rockfon Eclipse is not suitable for use in swimming pools or outdoors.	Up to 100% RH. No visible deflection in high humidity C/0N		
 <b>Reaction to fire</b>	A1	A1	A1	A1	A1	A1	A2-s1,d0	A2-s1,d0	
 <b>Environment</b>	Recyclable							The stone wool core is recyclable	



# The right product in the right space

Getting your school design to sound as good as it looks starts by **understanding the challenges each room-type faces**. Please have a look at our overview to see what considerations need to be taken in each space, and what products we recommend to create a comfortable environment for students and teachers.



## 1 HALLWAYS AND BREAKOUT AREAS

Noise control

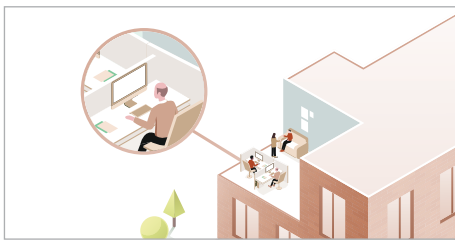
- Rockfon® Sonar™
- Rockfon® Eclipse™
- Rockfon® Universal™ Baffle



## 4 CAFETERIA AND KITCHEN

Noise control & Hygiene

- Rockfon Color-all®
- Rockfon Eclipse®
- Rockfon® Universal™ Baffle



## 2 OFFICE AND ADMINISTRATION

Sound insulation & Privacy

- Rockfon dB
- Rockfon® Sonar™
- Rockfon® Sonar Activity™



## 5 GYMNASIUMS

Noise control & Impact resistance

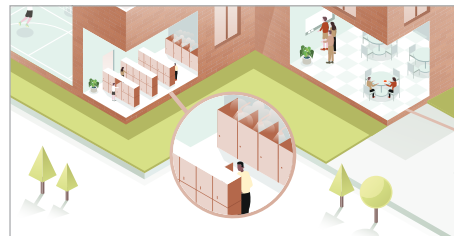
- Rockfon® VertiQ™ wall panel
- Rockfon® Universal™ Baffle



## 3 CLASSROOMS

Speech clarity & Reducing noise

- Rockfon® Sonar Activity™
- Rockfon Color-all®
- Rockfon Eclipse® wall panel
- Rockfon® VertiQ® wall panel



## 6 CHANGING AND SHOWER ROOMS

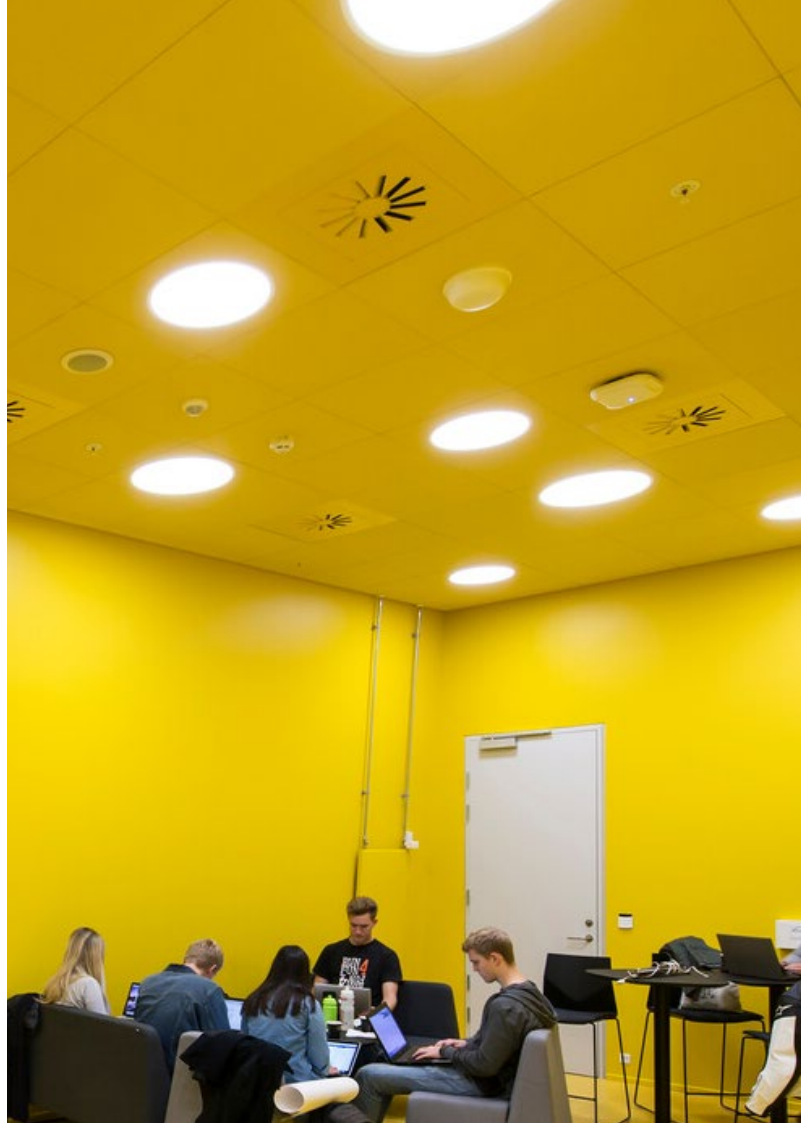
Echoing & Humidity

- Rockfon® Koral™
- Rockfon® Tropic™
- Rockfon® Artic™

## The influence of **Rockfon Color-all®**

Want to enhance wellbeing and ambience by using colour? Our coloured ceilings and wall solutions don't just reduce the noise; they also help create unique spaces. The range comes in 34 exclusive colours, and that inspire and enhance your interior design, giving you the possibility to set the mood in the classroom.

- Choose from everything from subtle to bold long-lasting colours
- An extensive range of semi-concealed and concealed edges in a large variety of module sizes
- Bring a splash of colour to the walls and set the tone for the classroom and make your design stand out



## The resistance of **Rockfon® VertiQ®** wall panel

Attractive and impact-resistant, the highly sound-absorbent acoustic wall panels complement our ceilings to ensure building regulations are met. Its versatility makes it at home in classrooms, hallways and even gymnasiums.

- Make sure acoustic building requirements are met by also adding wall panels to your school design
- Bring some durable colour to your walls and choose from a variety of shades like white, light grey, grey and black
- Create a pattern by installing your wall solutions either horizontally or vertically

## The power of Rockfon® Blanka®

Its super-white surface, with its high light reflection and light diffusion, creates a comfortable indoor environment with exceptional acoustics. The range comes in multiple dimensions and edges for full design flexibility. It's available in different thicknesses, making it optimal for schools, where sound needs to be optimised for all speech frequencies.

- Perfect for sound control in all speech frequencies
- Enjoy maximum natural brightness, with 99% light diffusion
- Contribute to energy savings of up to 23%
- Choose a durable product that will look as good as the day it was installed.



## The strength of Rockfon® Sonar®

It's attractive micro-textured white surface, with strong edges for superior durability creates a comprehensive range of aesthetically pleasing tiles. This product ideally suited for use in multitude of spaces such as offices, retail environments, classrooms and clean rooms – all in compliance with sound absorption requirements.

- High degree of freedom for designers and architects
- Unique combination of fire class A1, best-in-class sound absorption and dimensionally stable even at humidity levels of up to 100%
- Easy-to-clean surface
- Wide sizing that is well-suited to classrooms

# We are your sustainability partner

Sustainability sits at the heart of our research and development. It's why we use natural stone, constantly reduce our carbon footprint and recycle to look after our planet and our people.

Schools are continuously being renovated, adapted or extended, impacting the environmental footprint for building materials. Luckily for us, stone wool is a fully sustainable closed-loop product. It can be recycled again and again without any degradation in quality.

We offer all our customers to recycle old stone wool ceiling tiles and cut-offs from installation, helping make a meaningful contribution to a greener planet.

Visit our webpage for more information about our takeback scheme.





**159 000 tonnes  
of stone wool  
were collected for  
recycling in 2019.**

## ◀ CASE STUDY

### Lyceum Schravenlant

Rotterdam, Holland

#### *Challenge:*

The Dutch High School Lyceum Schravenlant is the first educational building in the Netherlands designed and built after the cradle-to-cradle principles. That means that the school must be completely demountable at the end of its life cycle and the materials are given a new life as different products.

#### *Solutions and results:*

To meet this eco-friendly school building, LIAG architecten wanted a healthy acoustical atmosphere. "A building is only sustainable if it contributes to the primary goal of its existence – in this case, education. In that sense, a healthy indoor climate is a must," says Thomas Bögl of LIAG architecten. The result is a comfortable and sustainable school which is future-proofed to easily accommodate the adaptation of new techniques and the flexible division of rooms.

# Be part of making the world sound better to everyone

Get started today

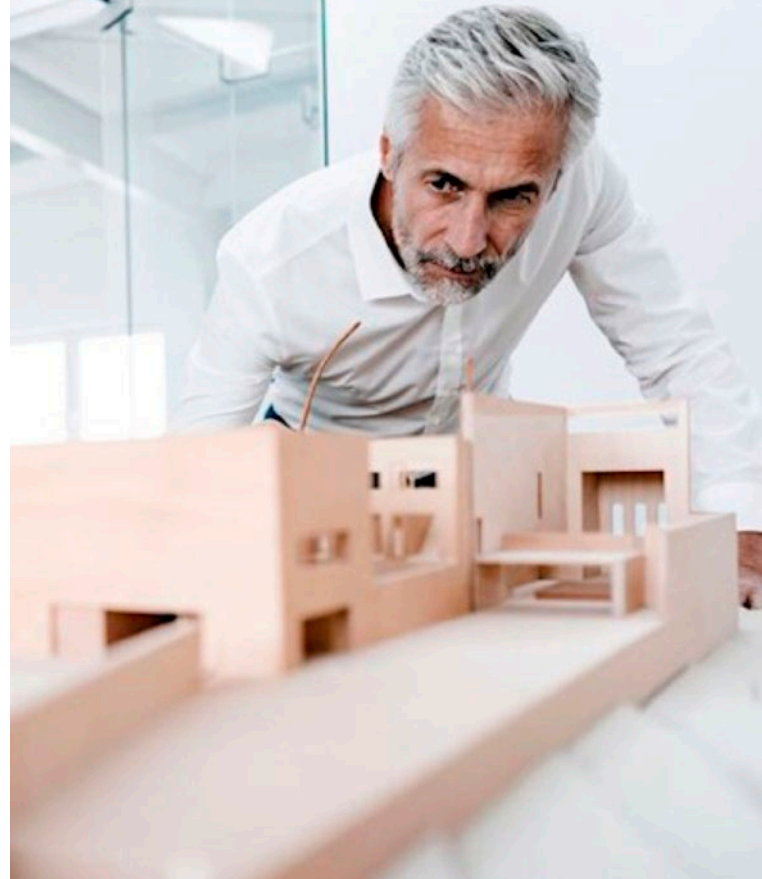
Rockfon is part of the ROCKWOOL Group and we are the world's leading acoustic company – and our mission is to keep things quiet.

## **We're the shh in thoughtful classrooms**

Every day we are inspired to innovate with sound solutions that help people think, concentrate and enjoy life more. Our acoustic solutions do more than reduce noise, they also create calmer, healthier buildings for students and staff.

## **We're here to help**

We have 22 offices and 47 manufacturing facilities worldwide and we're on hand to help you find the right acoustic solutions for your next healthcare project.



## **We are your sustainability partner**

Our high-quality products are made from natural stone. They work, they're beautiful and they last – until they're recycled to make more. And we provide all the necessary documentation to support you in creating a sustainable school project.

## **Our online resources**

Explore our website for sound calculations, instruction videos, documents, and a comprehensive BIM library with objects compatible with ArchiCAD and Revit. Speed up your design processes with this free to use support on:

**Rockfon Middle East:** [ae.rockfon.com](http://ae.rockfon.com)

**Rockfon Asia:** [www.rockfon.asia](http://www.rockfon.asia)

# Let's connect

Give us a call whether you need advice on getting the right acoustic environment for your project, want to hear more about one of our products or just need technical support.

We're here to help.

## Rockfon Middle East:

[rockfonme@rockfon.com](mailto:rockfonme@rockfon.com)

[ae.rockfon.com](http://ae.rockfon.com)

## Rockfon Asia:

[enquiry@rockfon.com](mailto:enquiry@rockfon.com)

[www.rockfon.asia](http://www.rockfon.asia)

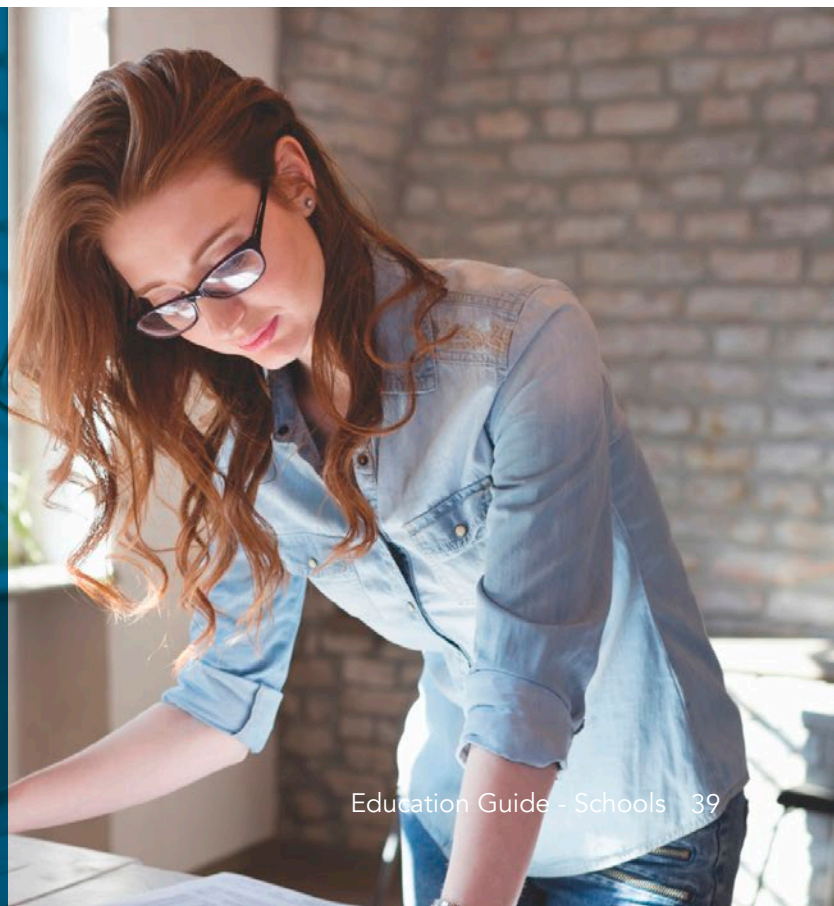
//

Rockfon  
proved to be  
an invaluable  
partner."

**Stephen Holmes**  
Managing Director, Linear

Easy as 1-2-3

Rockfon has created three tools designed to help you  
select the right acoustic performance



Rockfon® is a registered trademark  
of the ROCKWOOL Group.

03/2021 | All colour codes mentioned are based on the NCS - Natural Colour System® property of and used on license from NCS Colour AB, Stockholm 2012 or the RAL colour standard. Subject to alterations in range and product technology without prior notice. Rockfon accepts no responsibility for printing errors.

#### **Rockfon Singapore**

ROCKWOOL Building Materials  
(Singapore) Pte Ltd.  
No. 7, Tuas Avenue 1  
Jurong Town,  
Singapore 639492  
Tel: (+65) 6861 4722  
Fax: (+65) 6862 3533  
E-mail: enquiry@rockfon.com  
www.rockfon.asia

#### **Rockfon Hong Kong**

ROCKWOOL Building Materials  
(Hong Kong) Ltd.  
Unit 301-2, 3/F, Koon Wah Building,  
No.2 Yuen Shun Circuit,  
Yuen Chau Kok, Shatin,  
N.T., Hong Kong  
Tel: (+852) 2576-6117  
Mobile: (+852) 9161-7924  
E-mail: enquiry@rockfon.com  
www.rockfon.asia

#### **Rockfon**

ROCKWOOL Middle East FZE  
Office 139, Building 6WB, DAFZA  
P. O. Box 293585, Dubai, UAE  
  
Tel: +971-4-214-6280  
E-mail: rockfonme@rockfon.com  
ae.rockfon.com

#### **Rockfon**

ROCKWOOL France S.A.S.  
111, rue du Château des Rentiers  
75013 Paris  
  
Tel: +33 1 40 77 82 82  
Fax.: +33 1 45 86 77 90  
E-mail: info@rockfon.fr  
www.rockfon.fr

